



TRI-MACH

EVER-KLEEN[®]

Vertical Elevator

Product Catalogue

REACH NEW HEIGHTS
WITH A SMALLER FOOTPRINT

CONTINUOUS Vertical Elevator



INCREASE
THROUGHPUT
LIKE NEVER
BEFORE

built with
EVER-KLEEN[®]
technology



THE EVER-KLEEN ADVANTAGE

Features

- Rapid cycle times for maximum throughput
- Fully automated, reducing manual labour
- Vertical design optimizes facility capacity
- Customized to meet your specific product
- Hygienic design for quick and easy wash-downs
- Safe guarding design, eliminating risk of worker injury
- Built to last, with minimal stoppage

Specifications

- Power: 230/460 3-Phase V
- Capacity: 13,000 lbs.
- Throughput: 2,000 cases per hour
- Product Size: 36" x 24"
- 2HP Brakemotor
- Suitable for: Boxes, trays, pallets, etc.

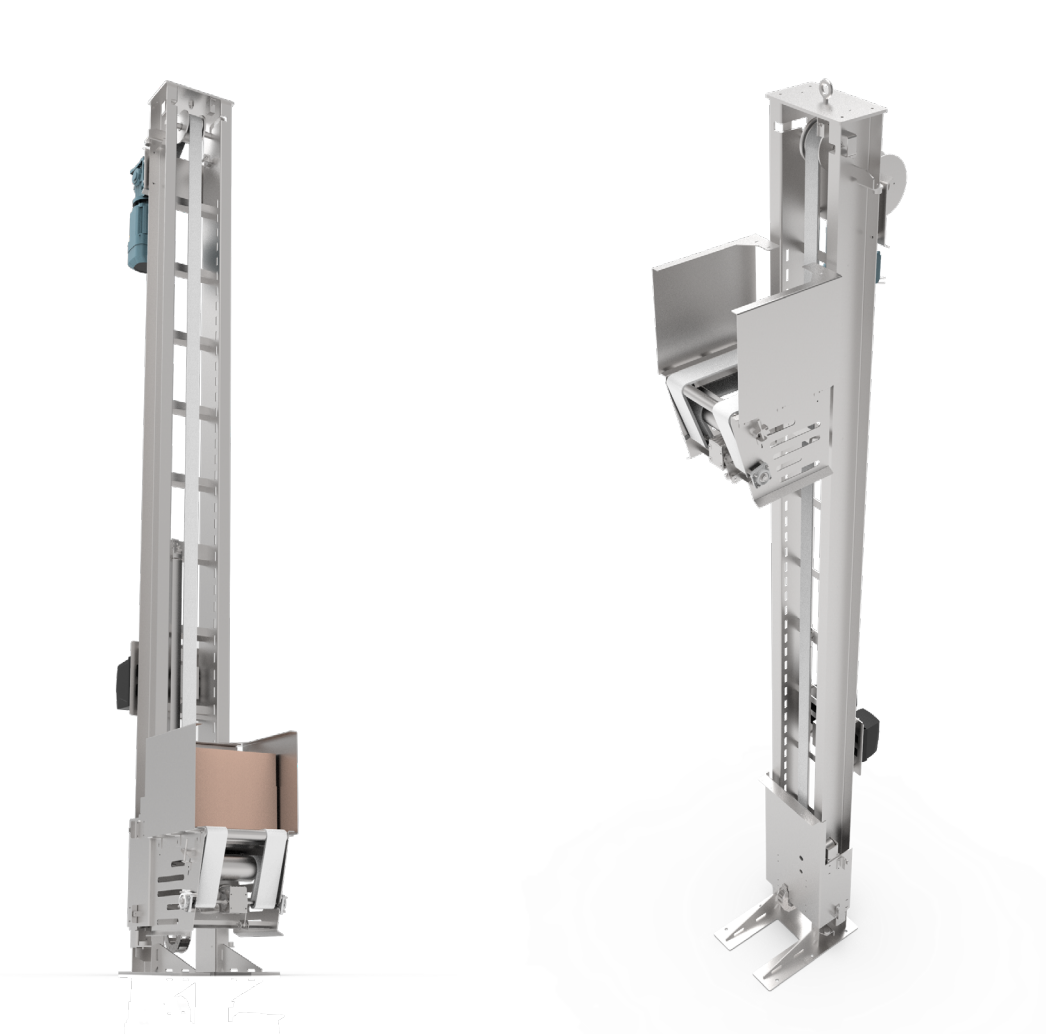
Get a Quote Today: sales@tri-mach.com | 1-877-874-6224

DISCONTINUOUS Vertical Elevator



MAXIMIZE
CAPACITY
WITH MINIMAL
FOOTPRINT

built with
EVER-KLEEN[®]
technology



THE EVER-KLEEN ADVANTAGE

Features

- Vertical design optimizes facility capacity
- Fully automated, reducing manual labour
- Rapid cycle times for maximum throughput
- Customized to meet your specific product
- Hygienic design for quick and easy wash-downs
- Safe guarding design, eliminating risk of worker injury
- Built to last, with minimal stoppage

Specifications

- Power: 230/460 3-Phase V
- Capacity: 50 lbs.
- Throughput: 240 cases per hour
- Product Size: 42" x 21" x 187.5"
- 2HP Brakemotor
- Suitable for: Boxes, trays, etc.

Get a Quote Today: sales@tri-mach.com | 1-877-874-6224

TRI-MACH

Tri-Mach Inc.

18 Donway Court
Elmira, Ontario
N3B 0B3



Phone: 519 744 6565

Fax: 519 744 6829

Toll Free: 1 877 TRI MACH (874 6224)

info@tri-mach.com

tri-mach.com

24/7 Emergency Service Hotline

1 877 TRI MACH (874 6224)

Connect With Us

